



**STRATA INNOVATIVE  
SOLUTIONS**

# **PANEL FABRICATION EXPERTISE**

**Looking for reliable, custom control panels?**

Strata Innovative Solutions specializes in tailored designs for industries like oil and gas, renewables, and manufacturing. From SCADA integration to battery backup resilience, our panels ensure seamless performance and unmatched quality.

Call or email today to discuss your needs!

**Southern Region**

Matthew Barnes | BD Lead  
817-223-9868  
[matthew.b@strata-is.com](mailto:matthew.b@strata-is.com)



**Eastern Region**

Shane Pruitt | BD Manager  
724-317-2323  
[shane.pruitt@strata-is.com](mailto:shane.pruitt@strata-is.com)

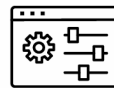


# Innovative Control Panel Expertise You Can Trust

## STRATA'S SPECIALTIES

Strata specializes in the design, fabrication, and testing of high-quality control panels for industrial automation, SCADA integration, and power management applications. Their panel fabrication capabilities provide reliable, efficient, and scalable solutions for industries such as oil and gas, utilities, renewables and manufacturing. Each panel is engineered to meet rigorous safety and operational standards and undergoes thorough Factory Acceptance Testing (FAT) to ensure optimal performance before deployment.

## CUSTOMIZED PANELS



Main PLC Control Panels



Remote I/O Panels



UPS Panels

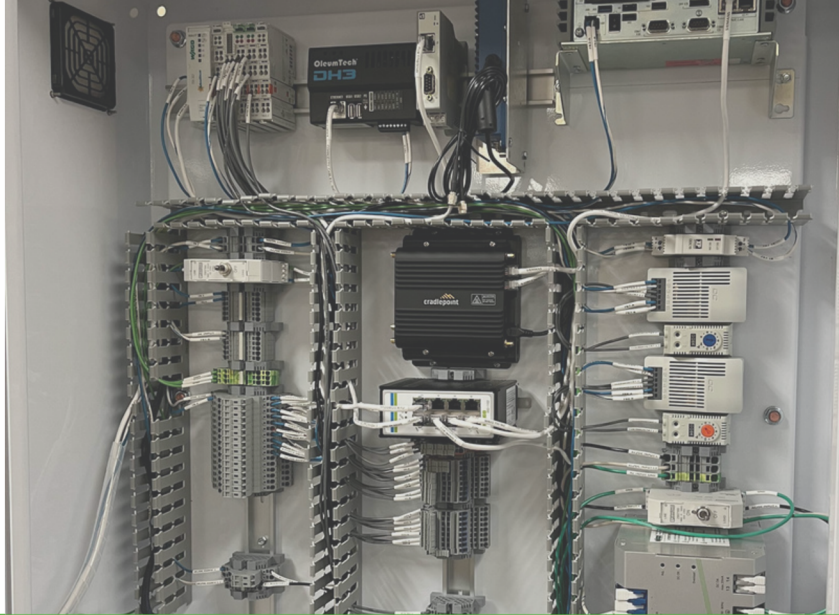


VFD Control Panels



[www.strata-is.com](http://www.strata-is.com)

# Main PLC Control Panels



## Fabrication Capabilities



### Design & Engineering

Comprehensive panel layout, wiring diagrams, and full documentation package



### Control System Integration

Programmable controller, remote input/output modules, and Ethernet networking components



### Human-Machine Interface

Panels include a 10-inch, or similar size, touchscreen HMI for operator control and data visualization



### Networking & Communication

Industrial Ethernet switch and a protocol converter for seamless data exchange



### Electrical Protection

Equipped with circuit breakers, relays, fuse blocks, and terminal blocks for enhanced safety and reliability



### Enclosure

Industrial-grade enclosure with back panel for durability in harsh environments



### Battery Backup Integration

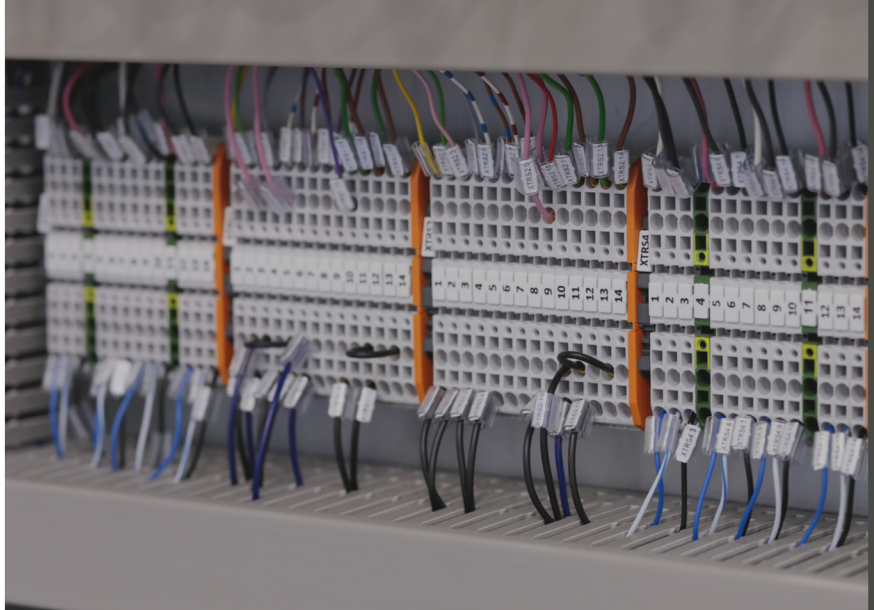
Separate UPS panel for uninterrupted power supply to PLCs, HMIs, network and communication systems



### Testing & Validation

FAT conducted to verify operational integrity before installation

# Remote I/O (RIO) Panels



## Fabrication Capabilities



### Distributed Control Integration

Remote input/output modules for processing digital and analog signals



### Networking & Communication

Industrial network adaptor and Ethernet switch for real-time data transfer



### Human-Machine Interface

7-inch, or similar size, touchscreen interface for local monitoring and control



### Safety & Electrical Protection

Integrated fuse blocks, terminal blocks, and circuit breakers for system integrity



### Enclosure

Heavy-duty industrial enclosure for environmental protection



### Battery Backup Support

Configured to receive power from an external UPS panel, ensuring uninterrupted data logging and control functions



### Testing & Validation

FAT performed to verify operational performance before deployment





# UPS Panels



## Fabrication Capabilities



### Power Management

Converts AC power to DC with built-in redundancy for critical loads



### Battery Backup & Charging System

- Integrated with multiple high-capacity batteries that provide extended uptime during power outages
- Automatically charges and conditions backup batteries to ensure consistent power availability
- Supports PLCs, communication devices, and field sensors during outages



### Redundancy & Reliability

Dual power management units and redundancy modules to prevent system failures



### Enclosure

Compact aluminum panel housing designed for field operations



### Testing & Validation

FAT conducted to confirm system functionality and backup reliability



# VFD Control Panels



## Fabrication Capabilities



### Design & Engineering

Comprehensive panel layout, wiring diagrams, and full documentation package



### Motor Control Integration

Incorporate VFDs to enable precise motor speed control, enhancing energy efficiency and process optimization



### Human-Machine Interface

Equip panels with user-friendly touchscreen interfaces for real-time monitoring and control of motor operations



### Networking & Communication

Integrate industrial Ethernet switches and protocol converters to facilitate seamless data exchange



### Electrical Protection

Install circuit breakers, relays, fuse blocks, and terminal blocks to ensure system safety and reliability



### Enclosure

Industrial-grade enclosures designed to withstand harsh environments, ensuring durability and compliance



### Battery Backup Integration

UPS systems ensure continuous operation of critical components during power disturbances



### Testing & Validation

FAT to verify the operational integrity and performance of the VFD panels prior to deployment





# Key Advantages of Strata's Panel Fabrication Services

1

## Custom Engineering & Design

- Panels are tailored to specific client needs with detailed engineering documentation.
- Layouts are optimized for space efficiency and ease of maintenance.

2

## High-Performance Components

- Built with industrial-grade materials to ensure reliability and long-term operation.
- Includes robust power management, safety, and automation components for maximum efficiency.

3

## SCADA & Network Integration

- Supports seamless integration with SCADA and industrial automation systems.
- Networking hardware and protocol converters ensure secure data communication.

4

## Battery Backup & Power Resilience

- Integrated UPS panels provide failover power to critical devices, including PLCs, HMIs, network switches, and instrumentation.
- Battery charging systems ensure power availability in extended outages.
- Prevents data loss and operational disruptions due to power fluctuations.

5

## Rigorous Testing & Compliance

- Factory Acceptance Testing (FAT) ensures all panels meet performance standards before installation.
- Designed to comply with industry safety and operational regulations.

6

## Scalable & Future-Ready Designs

- Modular configurations allow for easy expansion and system upgrades.
- Designed to support industrial automation growth and increasing data demands.

### Southern Region

Matthew Barnes | BD Lead

817-223-9868

[matthew.b@strata-is.com](mailto:matthew.b@strata-is.com)



### Eastern Region

Shane Pruitt | BD Manager

724-317-2323

[shane.pruitt@strata-is.com](mailto:shane.pruitt@strata-is.com)